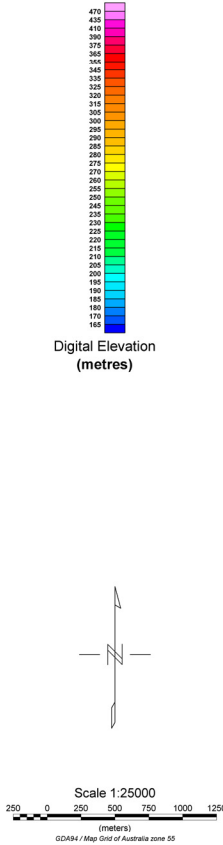
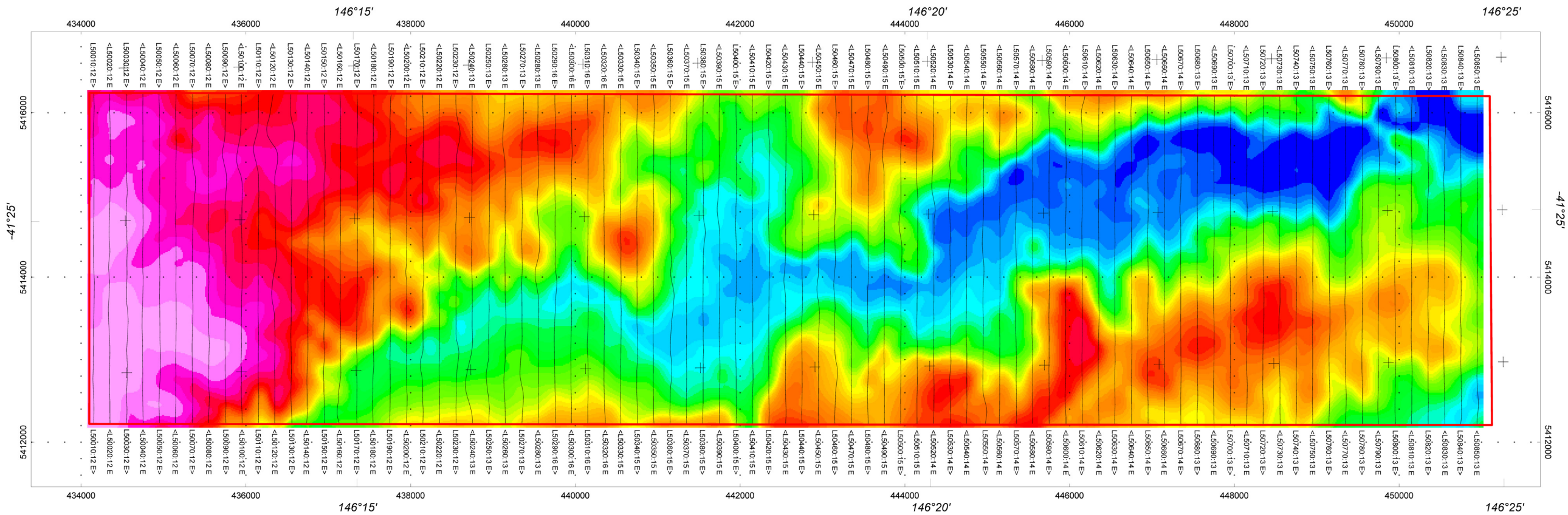


Survey Specifications:
Aircraft: AS350 B3 helicopter, Registration VH-IPW
Flight Line Spacing: 200 metres
Normal terrain clearance: 80 metres
EM Loop is 42 metres beneath helicopter
Magnetic sensor is 10.6 metres beneath helicopter

Instruments:
Geotech Time Domain Electromagnetic System (VTEM 12)
with concentric Rx/Tx geometry, Bucking Coil
Transmitter Loop Diameter 28 m, Base Frequency 25Hz
Dipole Moment 424.528 N/A
Transmitter Wave Form: Trapezoid, Pulse Width 7.35 ms
Geometrics Optically-pumped GS23A
High Sensitivity Cesium Magnetometer
Mag Resolution 0.02 nT at 10 samples/sec



Zinifex Limited
Tasmania
Block 5

Geotech VTEM System
Digital Elevation Model

Flown and processed by Geotech Airborne Pty Ltd.
Unit 1, 29 Muigul Road, Malaga
Western Australia, 6090
www.geotechairborne.com

March-April 2008

August 2008